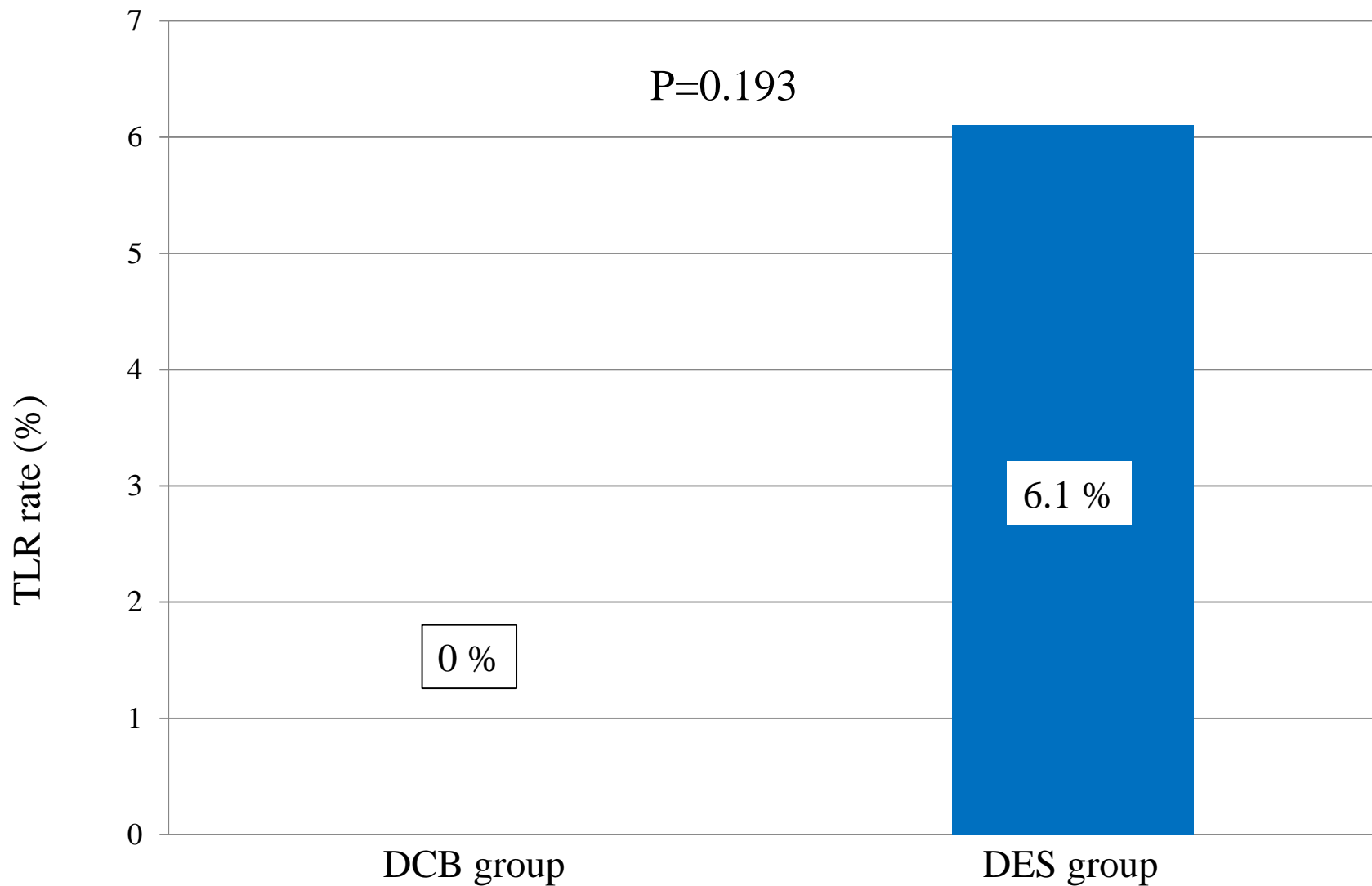
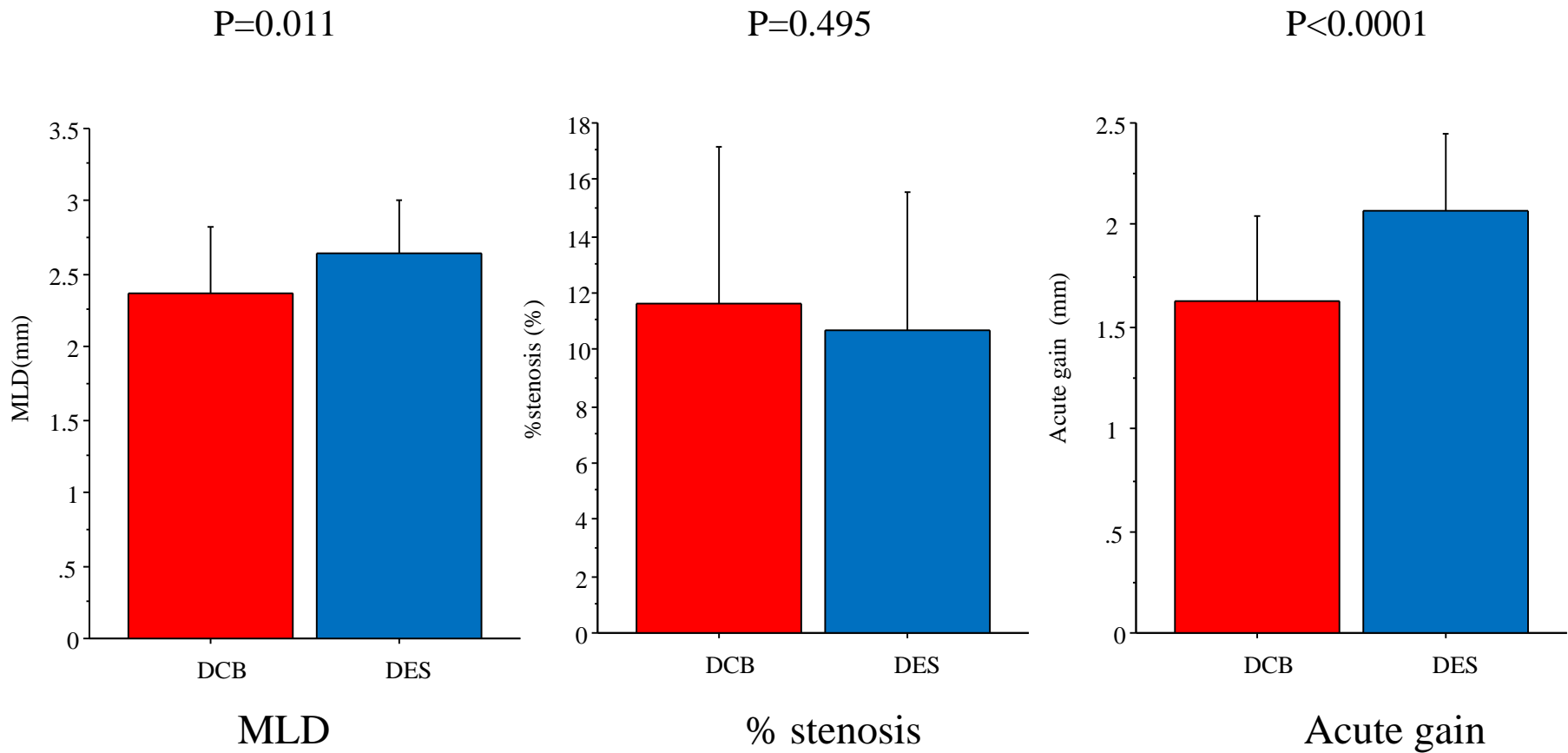


Study protocol



DCB: drug-coated balloon DES: drug-eluting stent
TLR: target lesion revascularization

Figure 2: Clinical driven TLR rate between the two groups



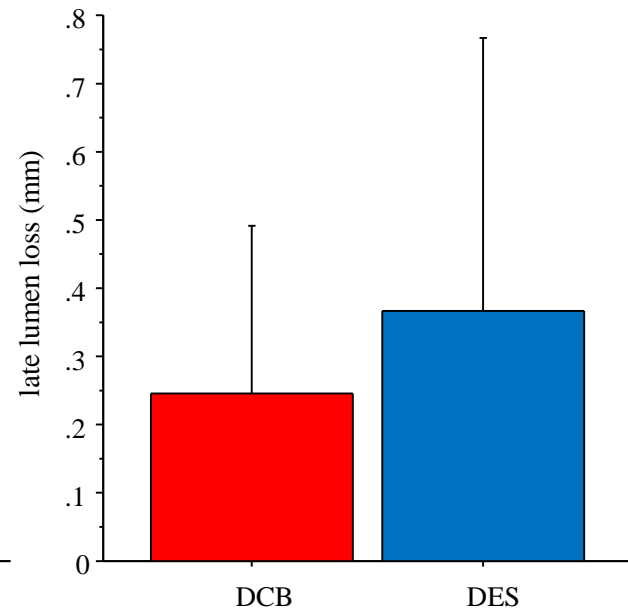
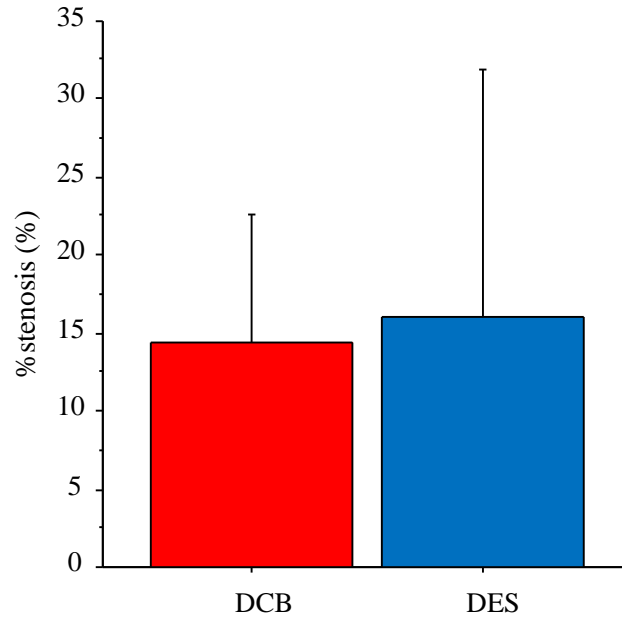
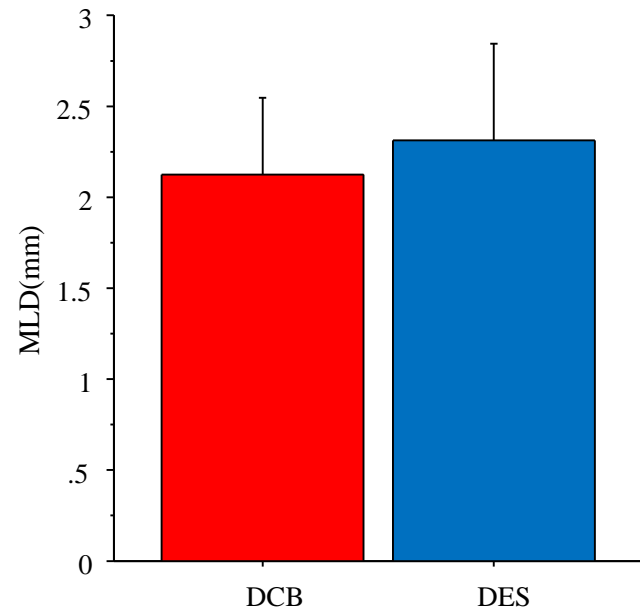
DCB: drug-coated balloon DES: drug-eluting stent
QCA: quantitative coronary analysis MLD: minimum lumen diameter

Figure 3A: QCA analysis immediately after PCI

P=0.121

P=0.639

P=0.185



MLD

% stenosis

Late lumen loss

DCB: drug-coated balloon DES: drug-eluting stent
QCA: quantitative coronary analysis MLD: minimum lumen diameter

Figure 3B: QCA analysis at follow-up