



Fig.1 Preoperative CT scan and angiography.

A | **B**

A:CT scan shows diffuse subarachnoid hematoma.

B:Right carotid angiogram demonstrates an aneurysm on the bifurcation of MCA.

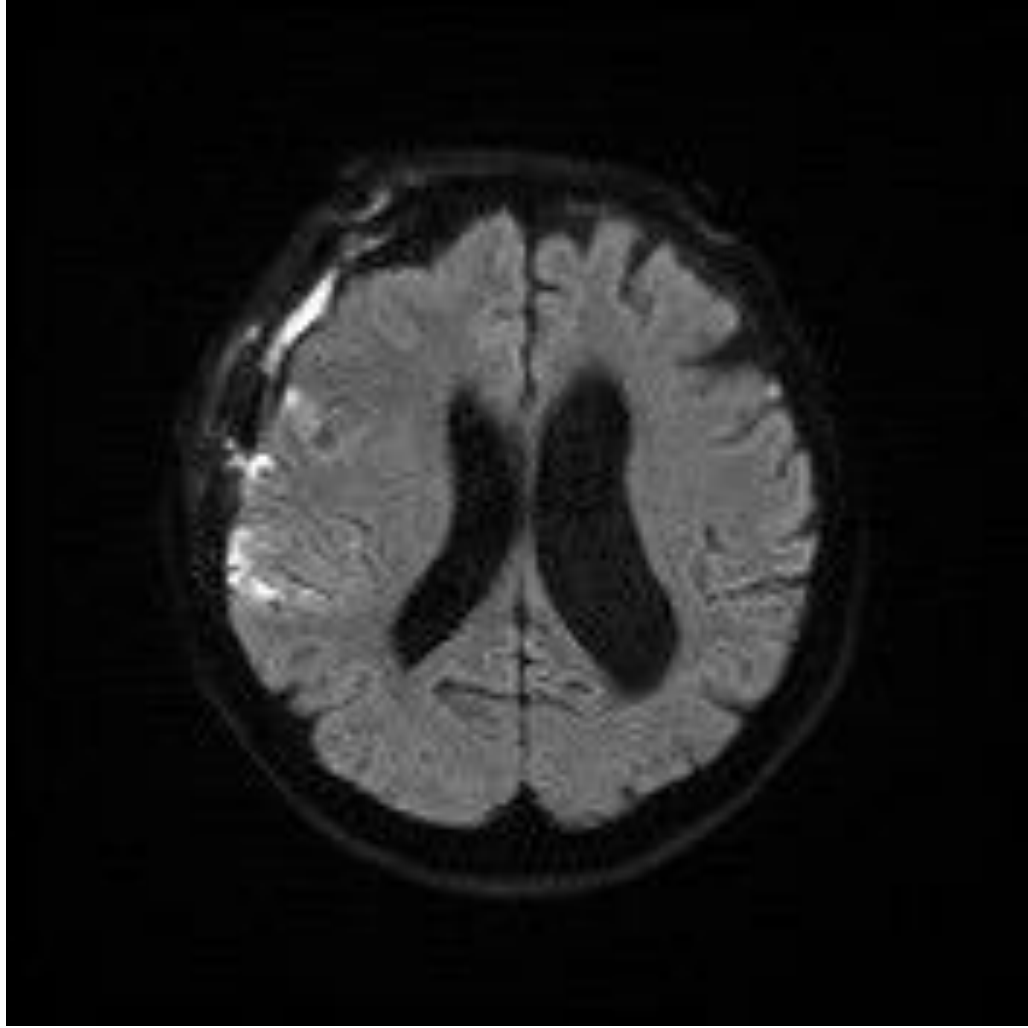


Fig.2 MRI(DWI) and MRA on the Day14.

A | **B**

A:MRI(DWI) shows no acute ischemia lesion.

B:MRA shows vasospasm in the periferal segment of MCA.

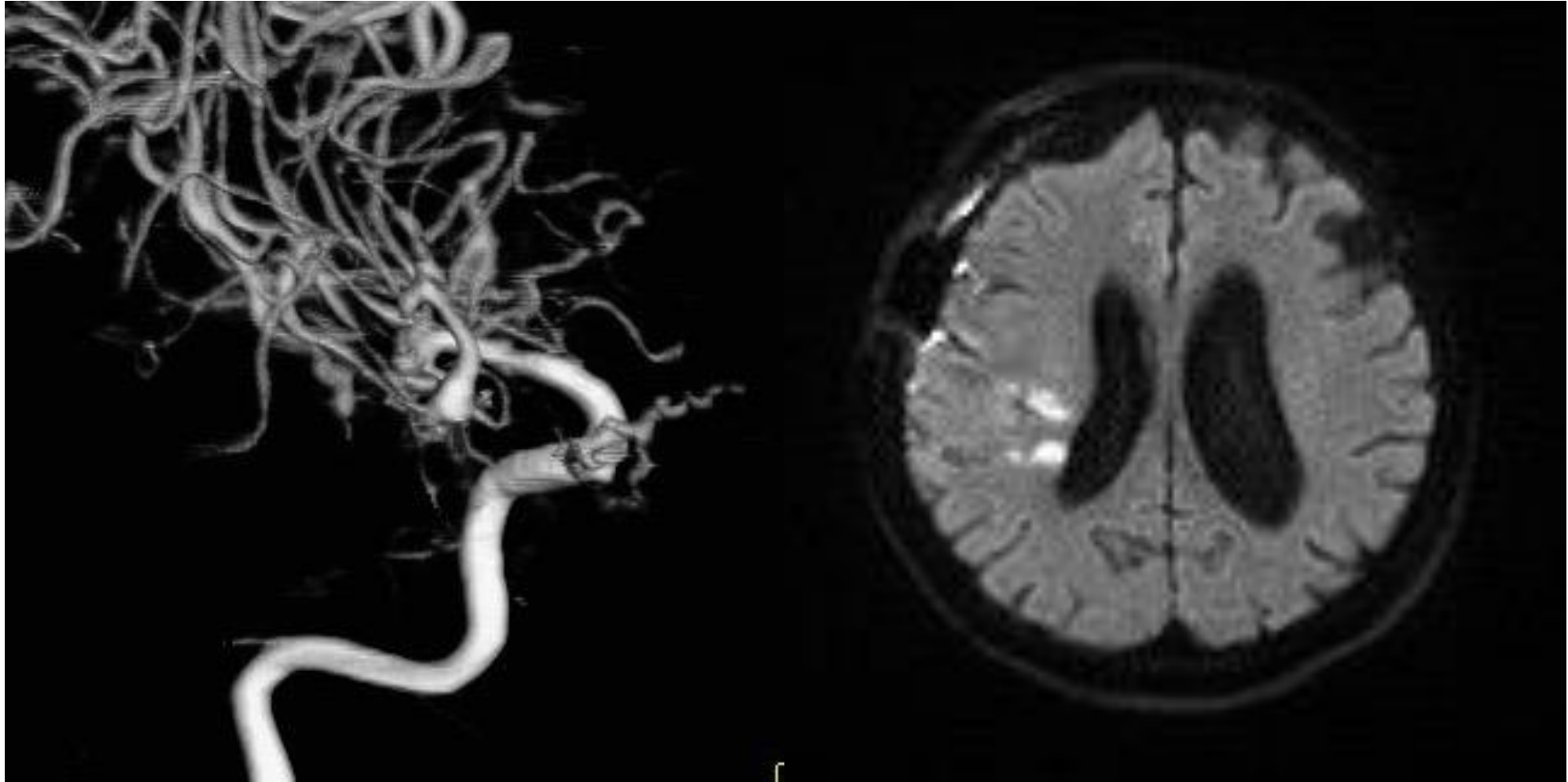


Fig.3 MRI(DWI) and angiography 3days after intrathecal administration of nicardipine was discontinued on Day14.

A | **B**

A:Angiogram on day17 shows severe vasospasm of the inferior trunk of MCA.

B:MRI(DWI) on day27 shows newly developed infaraction.