

Fig. 1

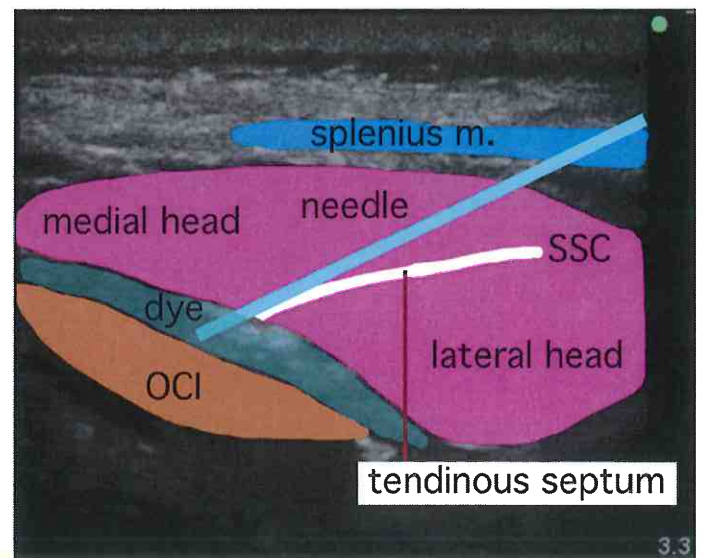
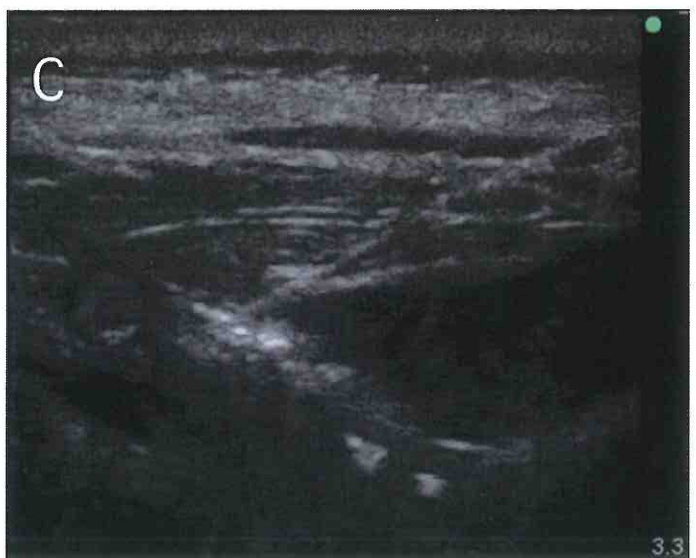
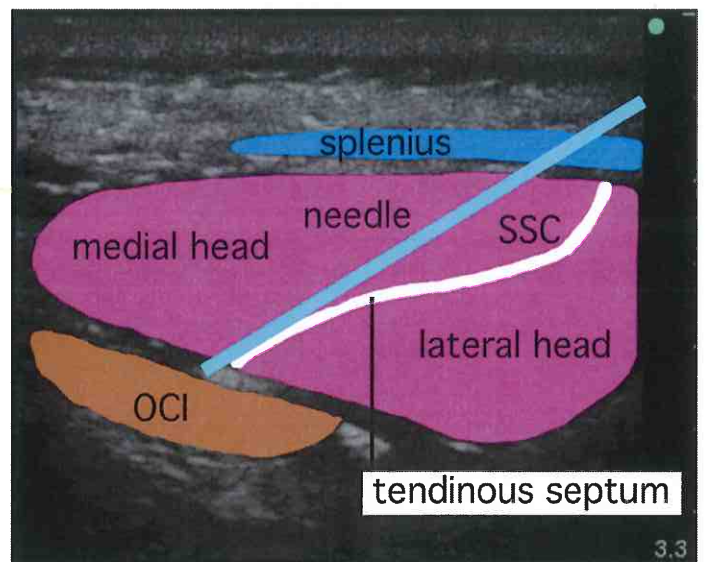
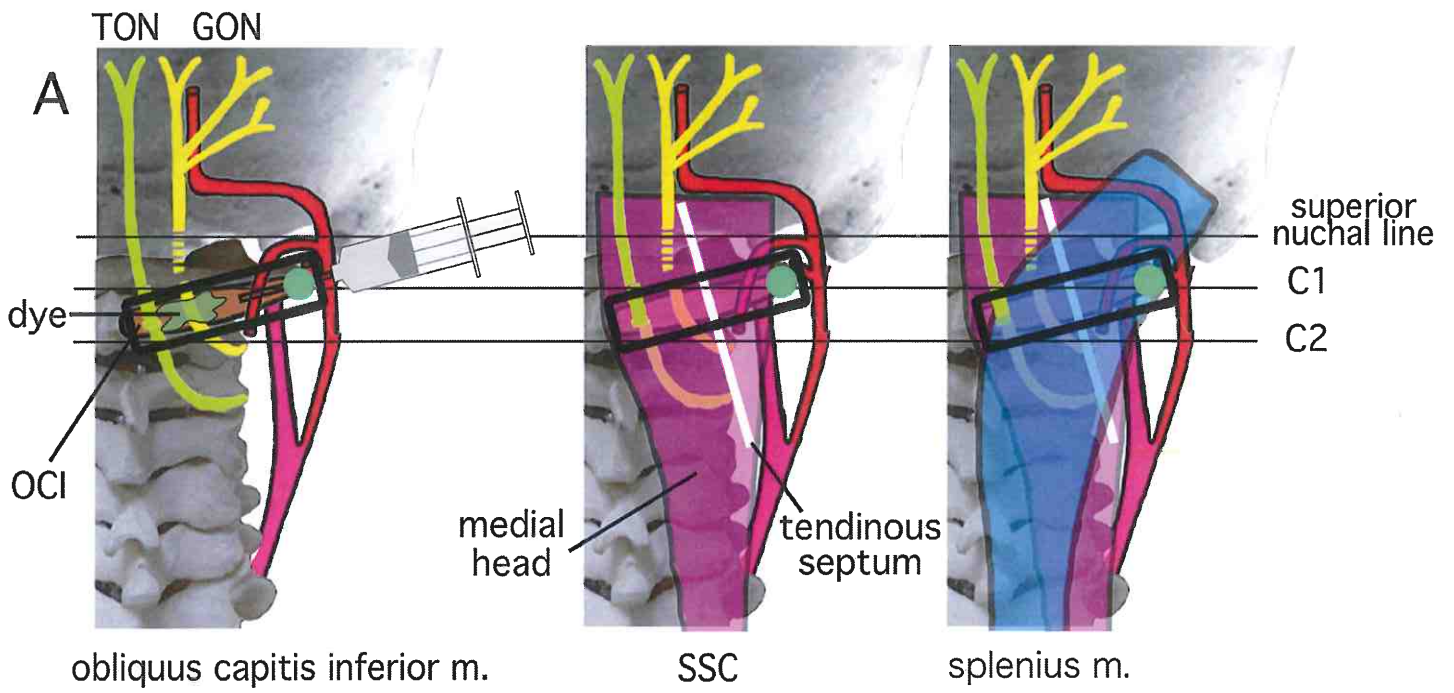


Fig. 2

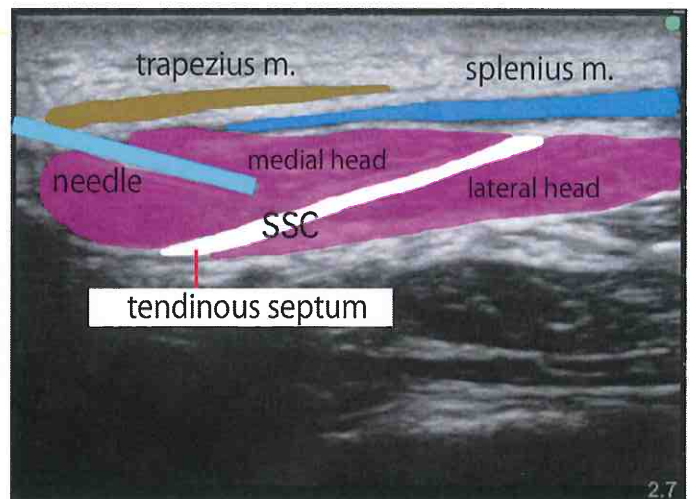
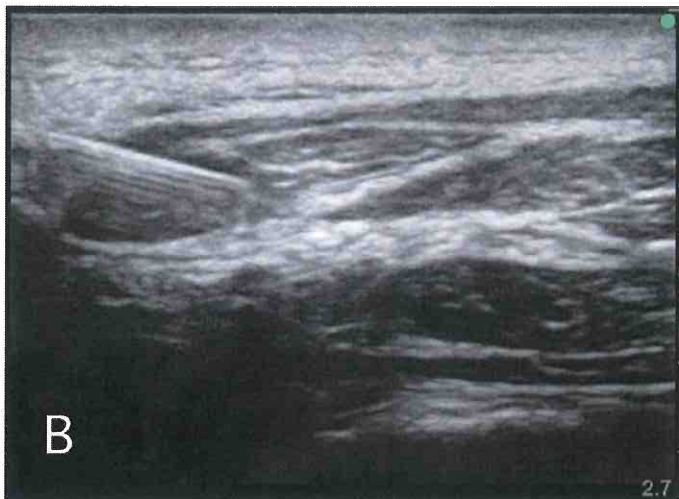
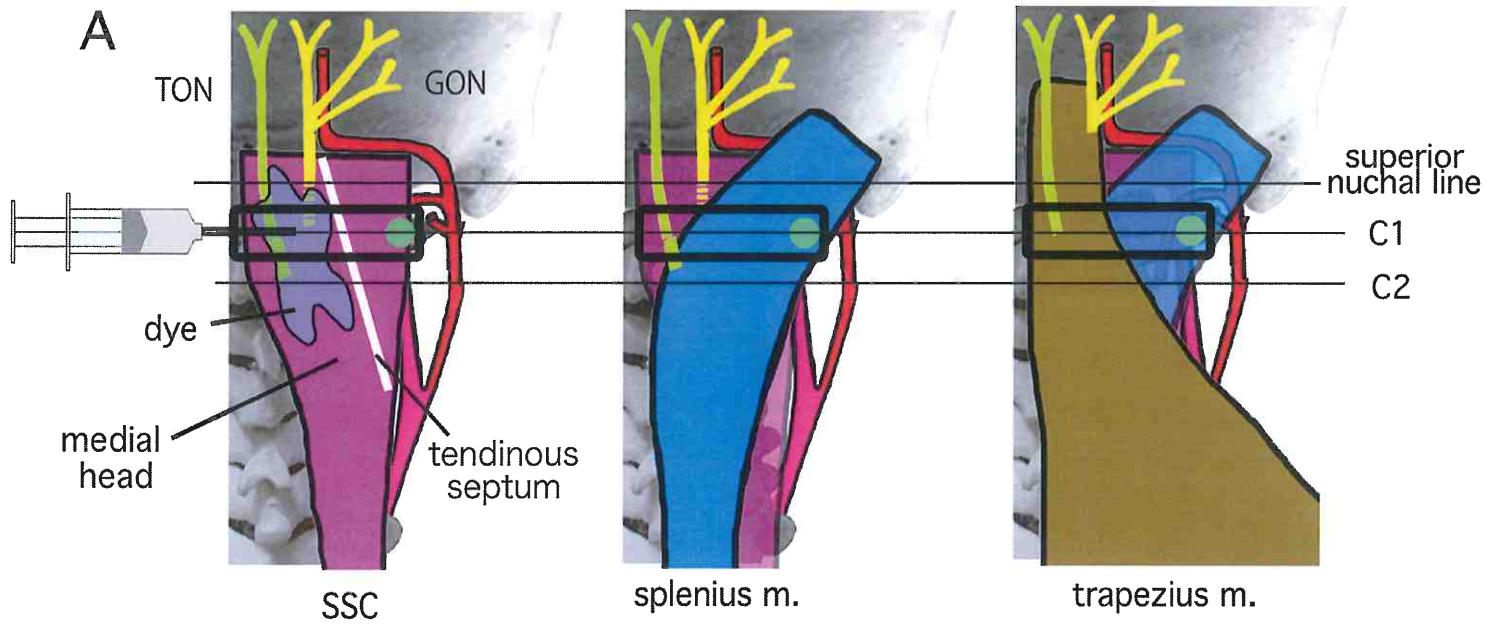
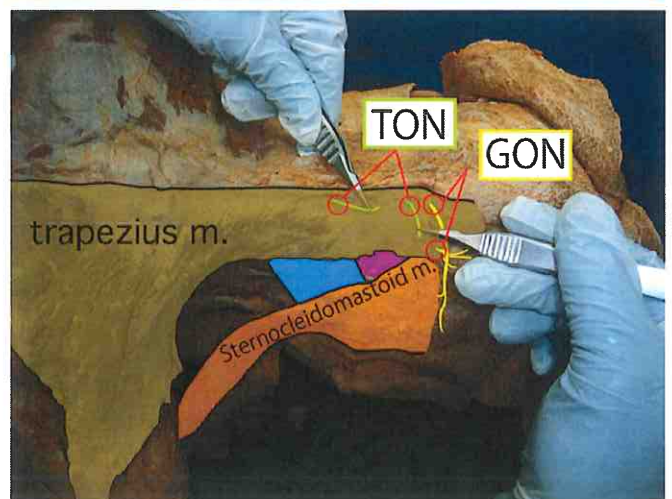
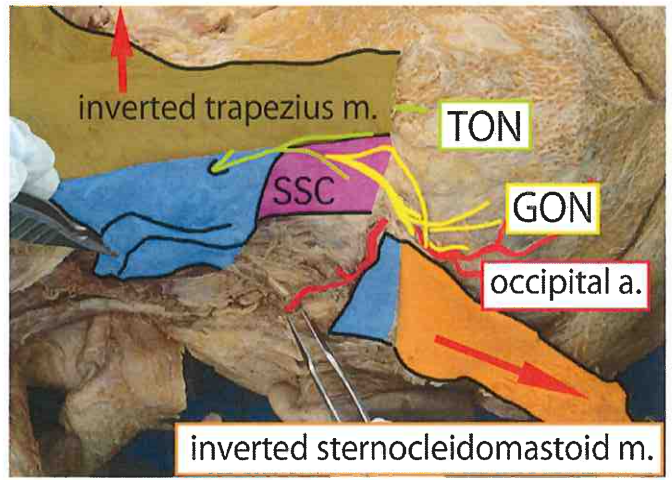
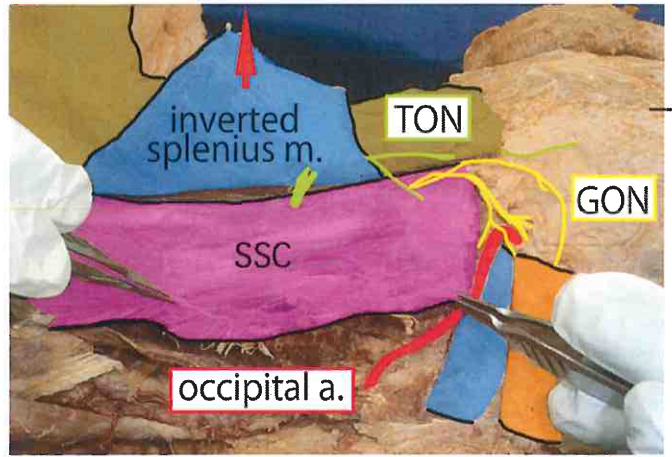
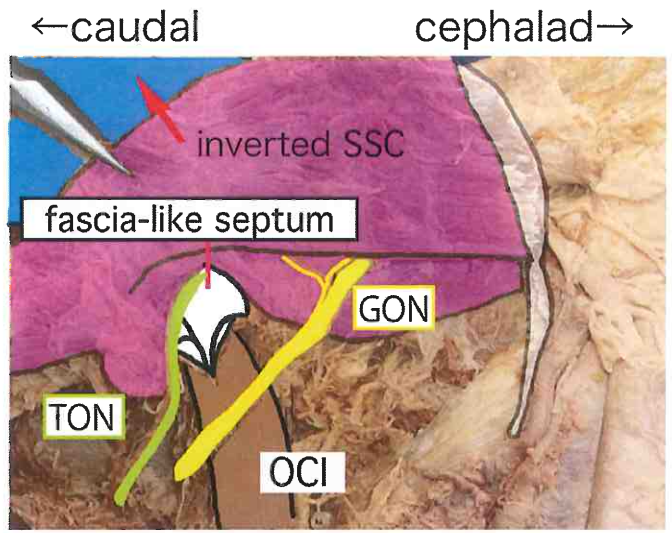
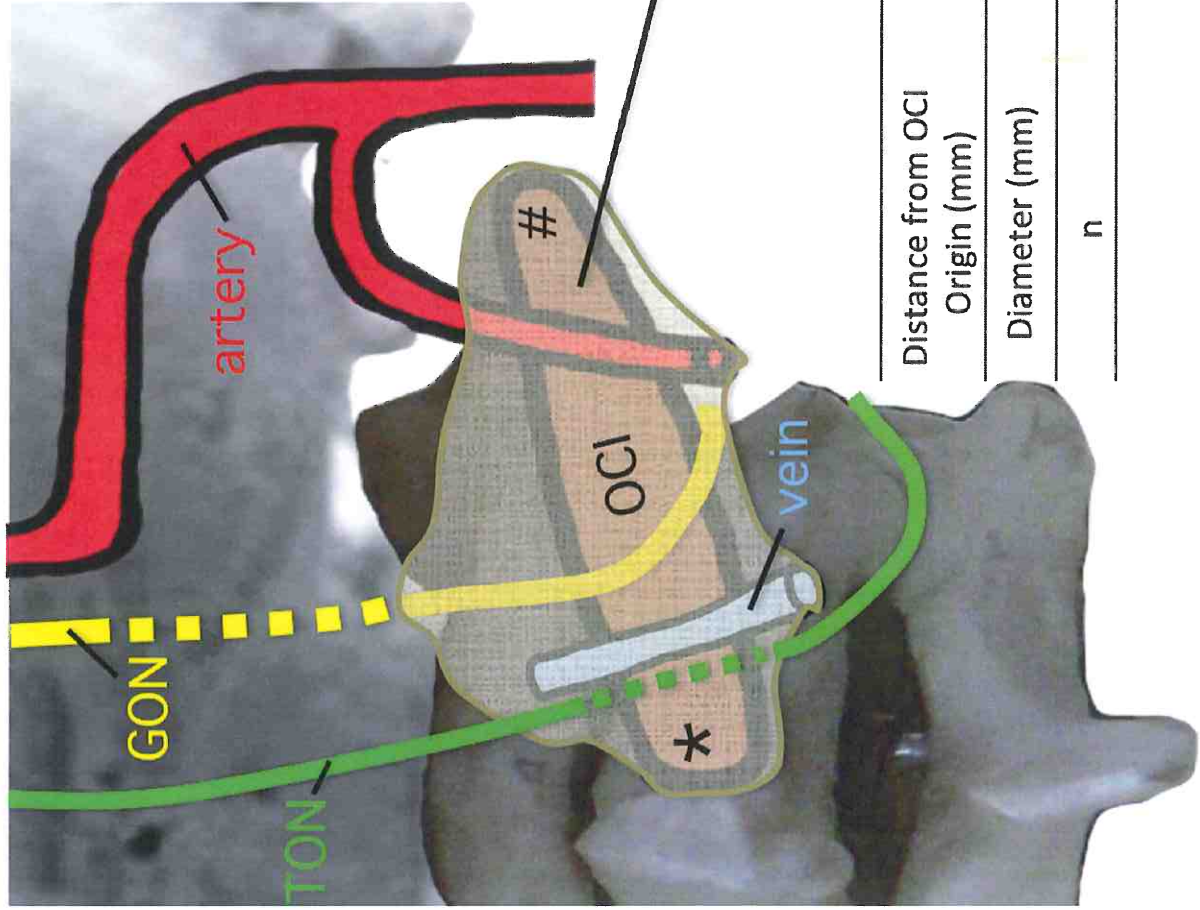


Fig. 3



midline
←right

Fig. 4



insertion of OCI (C1 transverse process)

* origin of OCI (C2 spinous process)

fascia-like septum covering OCI and GON but not TON

	TON	Occipital vein	GON	Occipital artery
Distance from OCI Origin (mm)	12.0 ± 5.0	14.1 ± 3.4	24.0 ± 2.9	51.0 ± 8.2
Diameter (mm)	4.0 ± 1.9	6.9 ± 1.0	5.0 ± 1.8	2.0 ± 0.5
n	33	33	33	33

Fig. 5

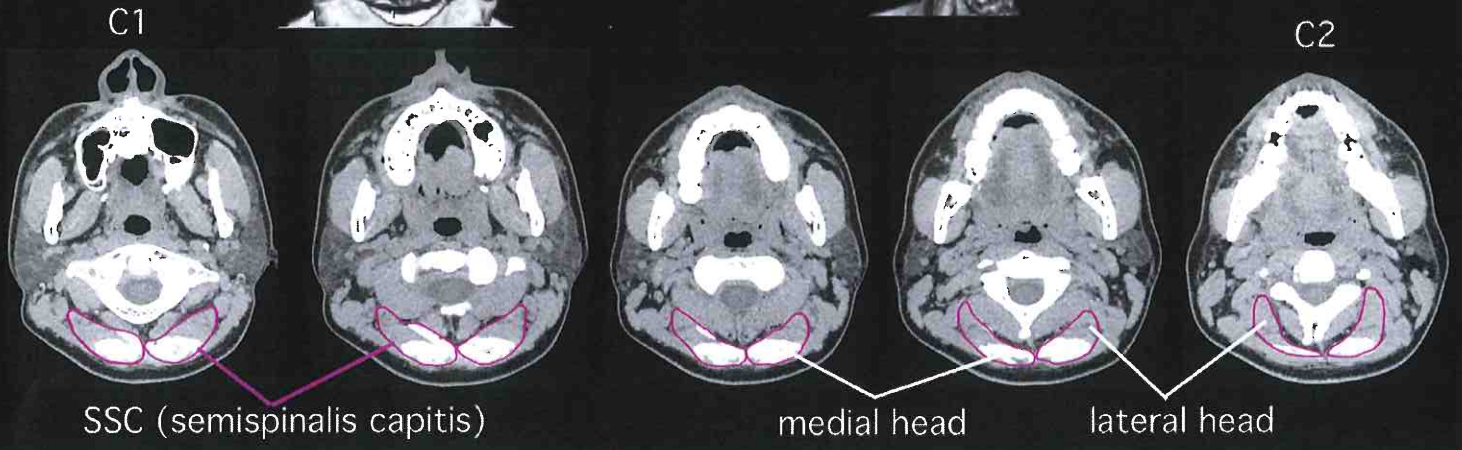
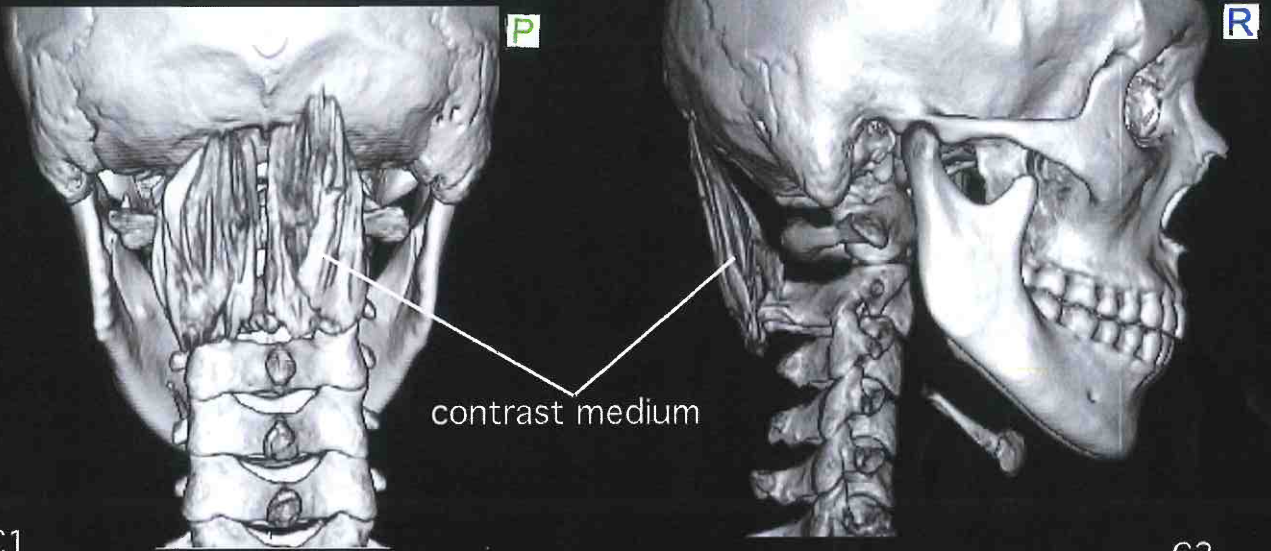
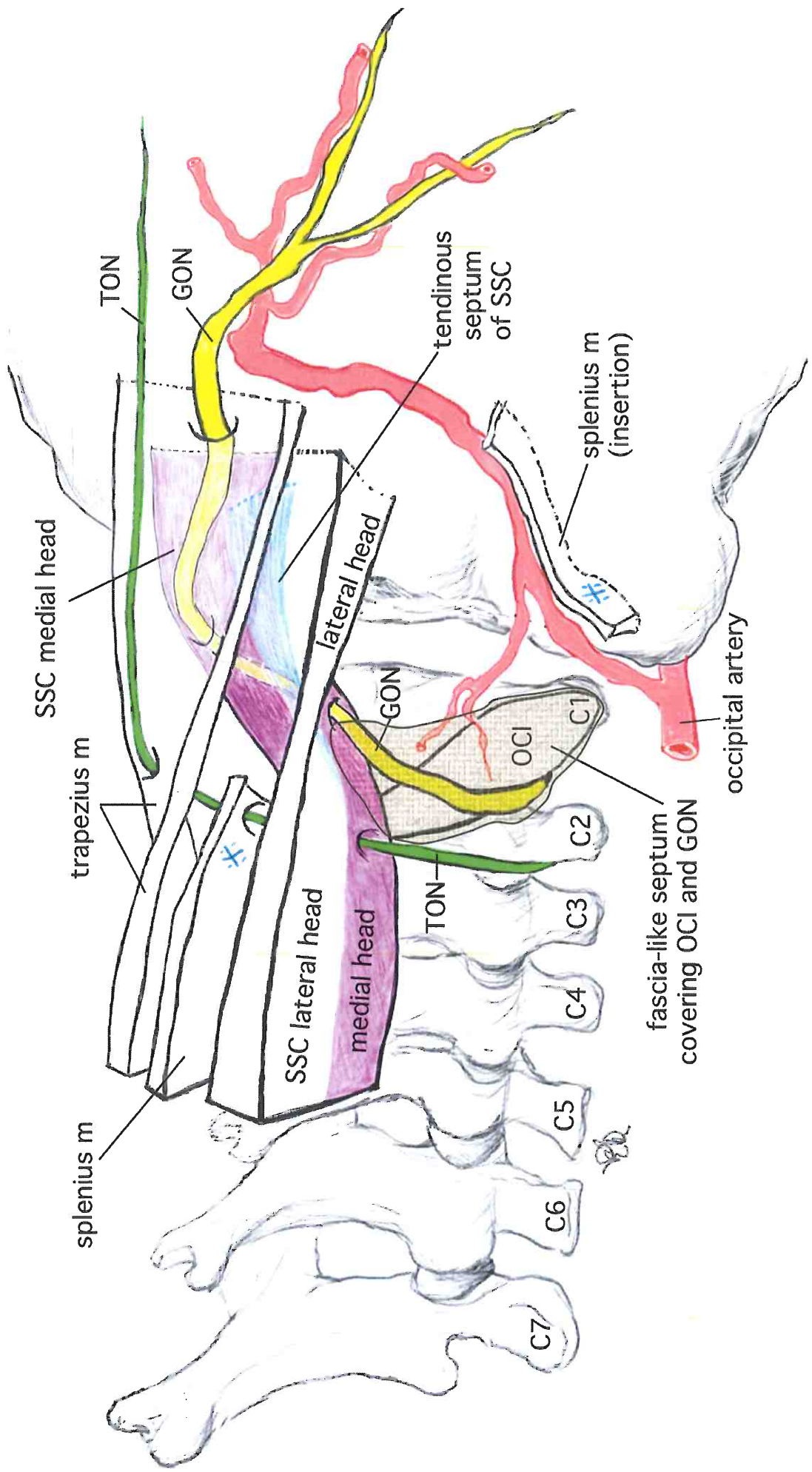
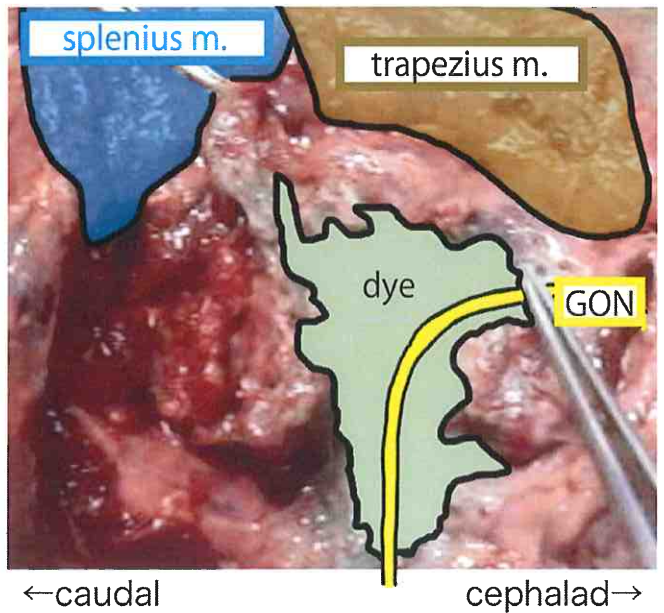
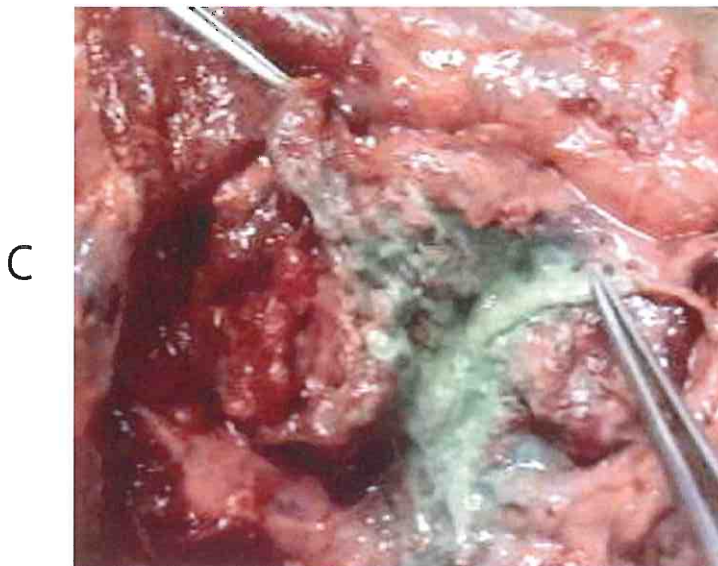
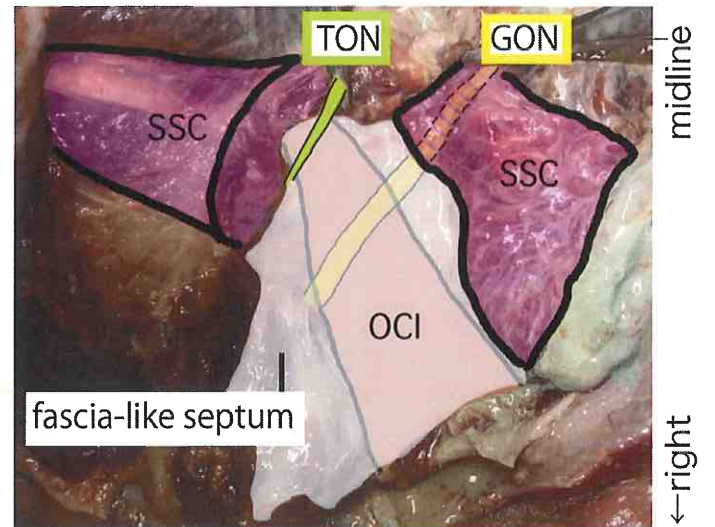
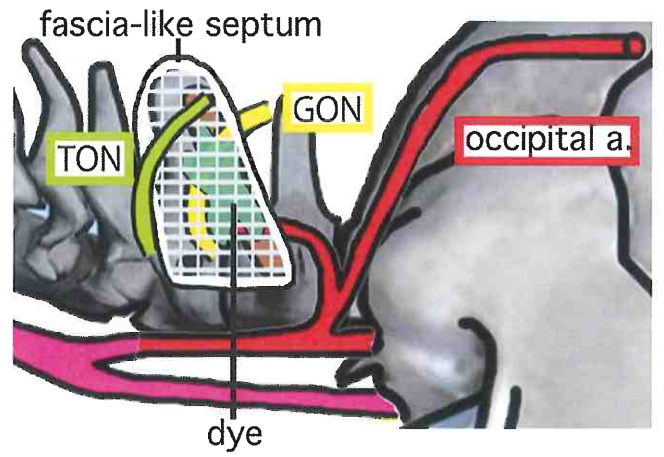
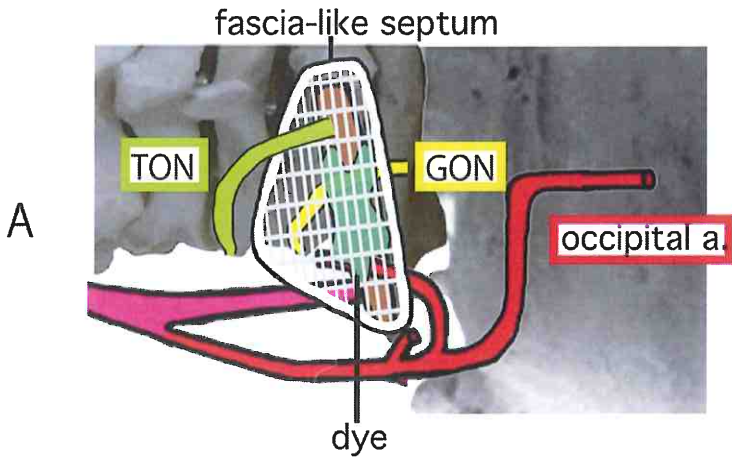


Fig. 6



Online 1



Online 2

